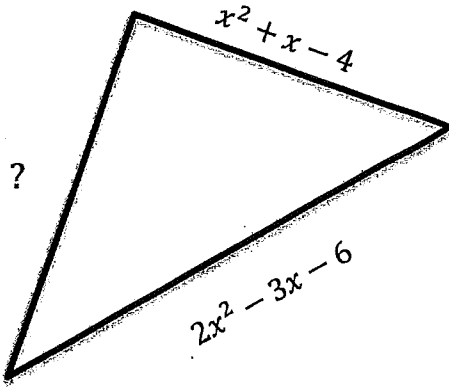


Date: _____

2.4 Applying Polynomials

Given the expressions for the perimeter and the expressions for the two sides, find the expression for the third side.



$$P = 5x^2 - 6x + 12$$

$$?? = P - \text{side 1} - \text{side 2}$$

$$= (5x^2 - 6x + 12) - (x^2 + x - 4) - (2x^2 - 3x - 6)$$

$$= 5x^2 - x^2 - 2x^2 - 6x - x + 3x + 12 + 4 + 6$$

$$= 2x^2 - 4x + 20$$

OR TRY INTUITIVELY